

# 管弦樂組曲第2番 BWV1067 序曲

♩ = 40

A1

4

7

10

13

16

♩ = 160

19

## 管弦樂組曲第2番 BWV1067 序曲

A1

9

18

27

36

44

52

60

69

78

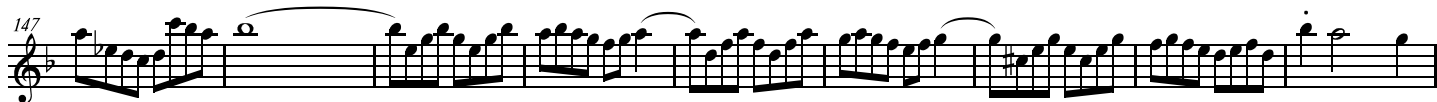
86

94

102

114

Detailed description: This image shows the first system of a musical score for the prelude of the second orchestral suite, BWV 1067, by Johann Sebastian Bach. The score is written for a single melodic line in G major, 3/4 time. It consists of 114 measures, divided into 13 systems of 9 measures each. The notation includes various rhythmic values such as eighth and sixteenth notes, often beamed together in groups. There are several trills and grace notes throughout the piece. The key signature has one sharp (F#), and the time signature is 3/4. The score is presented on a single page, with the first measure labeled 'A1' and the page number '1' in the top right corner.



♩ = 40

A1

The musical score for A1 consists of six staves of music in 3/4 time, starting with a treble clef and a key signature of one flat (B-flat). The tempo is marked as ♩ = 40. The piece begins with a half note G3, followed by a quarter note A3, and a quarter note B-flat3. The first staff contains measures 1 through 3. The second staff contains measures 4 through 6. The third staff contains measures 7 through 9. The fourth staff contains measures 10 through 12. The fifth staff contains measures 13 through 15. The sixth staff contains measures 16 through 18, ending with a double bar line. The melody features various rhythmic patterns, including eighth and sixteenth notes, and rests. There are several slurs and accents throughout the piece.